

# Year 2018

---

## VOLUME

- Design for the reconstruction of electrical installations, lighting, PKP information systems, low-current and protection systems, SSWiN, CCTV, SKD, LAN, Wi-Fi along with incident, clock, BMS and PSiM installations of the PKP Białystok railway station building.
- Design for the reconstruction of electrical installations, lighting, PKP information systems, low-current and protection systems, SSWiN, CCTV, SKD, LAN, Wi-Fi along with call, clock, BMS and PSiM installations in the PKP Skarżysko-Kamienna railway station building.

## Photovoltaics

- Project of photovoltaic installation as part of the task: Project of reconstruction of electrical installations, lighting, PKP information systems, low-current and protection SSWiN, CCTV, SKD, LAN, Wi-Fi along with incident, clock, BMS and PSiM installations of the PKP Białystok railway station building.

## Lighting

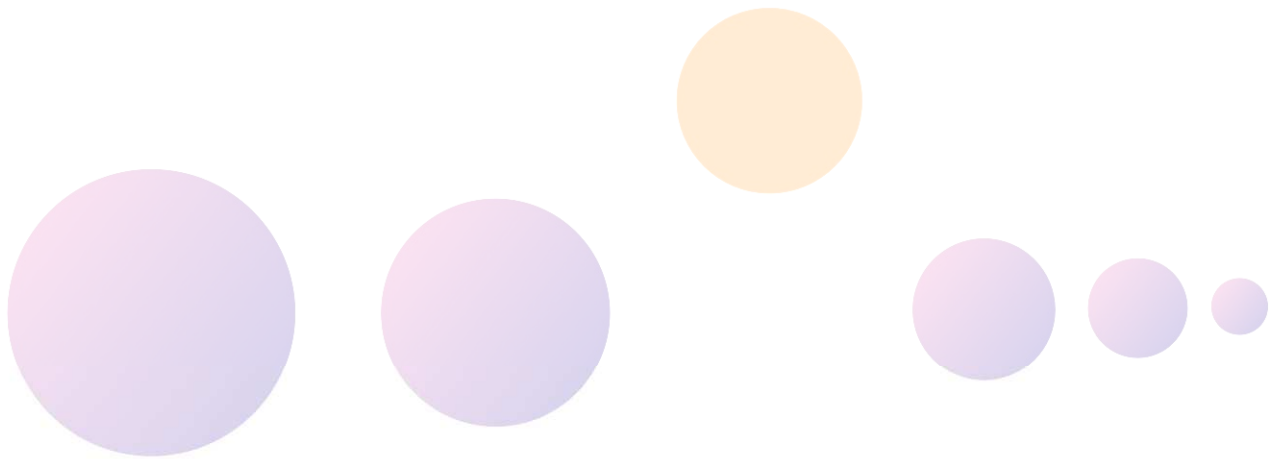
- Construction and executive design of the lighting network in Wąkczew.
- Construction and executive design of the lighting network on Osiedlowa Street in the town of Brudzeń Duży.

## POWER ENGINEERING

- Construction of the SN-15 kV power cable connection for the photovoltaic power plant "SPP Mroczi 1" in Mroczi in the Różan commune.
- Construction of the SN-15 kV power cable connection for the photovoltaic power plant "SPP Mroczi 2" in the town of Różan in the Różan commune.
- Construction of the SN-15 kV power cable connection for the photovoltaic power plant "SPP Załuza 1" in the village of Załuza in the Różan commune.
- Construction of the SN-15 kV power cable connection for the photovoltaic power plant "SPP Załuza 2" in the village of Załuza in the Różan commune.
- Construction of the SN-15 kV power cable connection for the photovoltaic power plant "SPP Czarnia 2" in the town of Czarnia in the Kadzidło commune.
- Construction of the SN-15 kV power cable connection for the photovoltaic power plant "SPP Brzozówka 1" in Brzozówka in the Kadzidło commune.
- Construction of the SN-15 kV power cable connection for the photovoltaic power plant "SPP Iwowe 1" in the town of Iwowe in Borowo commune.
- Construction of the SN-15 kV power cable connection for the photovoltaic power plant "SPP Todzia 1" in the town of Todz in the commune of Kadzidło.
- Construction of the SN-15 kV power cable connection for the photovoltaic power plant "SPP Głazewo 2"

in the town of Głazewo in the municipality of Młynarze.

- Construction of the SN-15 kV power cable connection for the photovoltaic power plant "SPP Brzozówka 1" in Brzozówka in the Kadzidło commune.
- Construction of the SN-15 kV power cable connection for the photovoltaic power plant "SPP Brzozówka 2" in the village of Brzozówka in the Kadzidło commune.
- Construction of the SN-15 kV power cable connection for the photovoltaic power plant "SPP Brzozówka 3" in the village of Brzozówka in the Kadzidło commune.
- Construction of the SN-15 kV power cable connection for the photovoltaic power plant "SPP Lipowiec 2" in the town of Lipowiec in the municipality of Chorzele.
- Construction of the SN-15 kV power cable connection for the photovoltaic power plant "SPP Lipowiec 3" in the town of Lipowiec in the municipality of Chorzele.



ELPROJECT